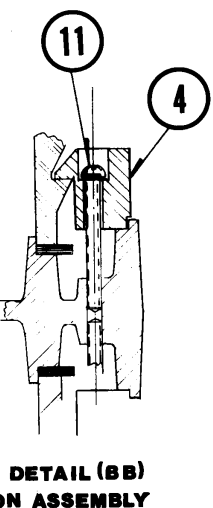
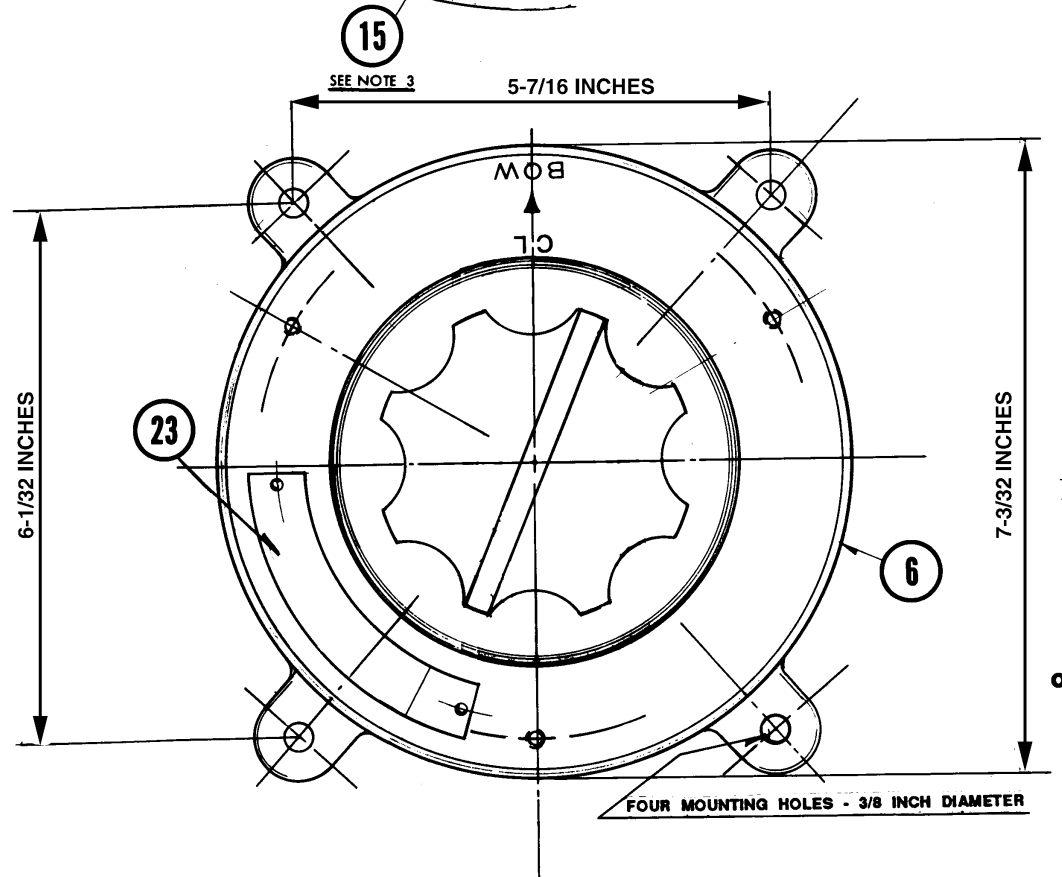
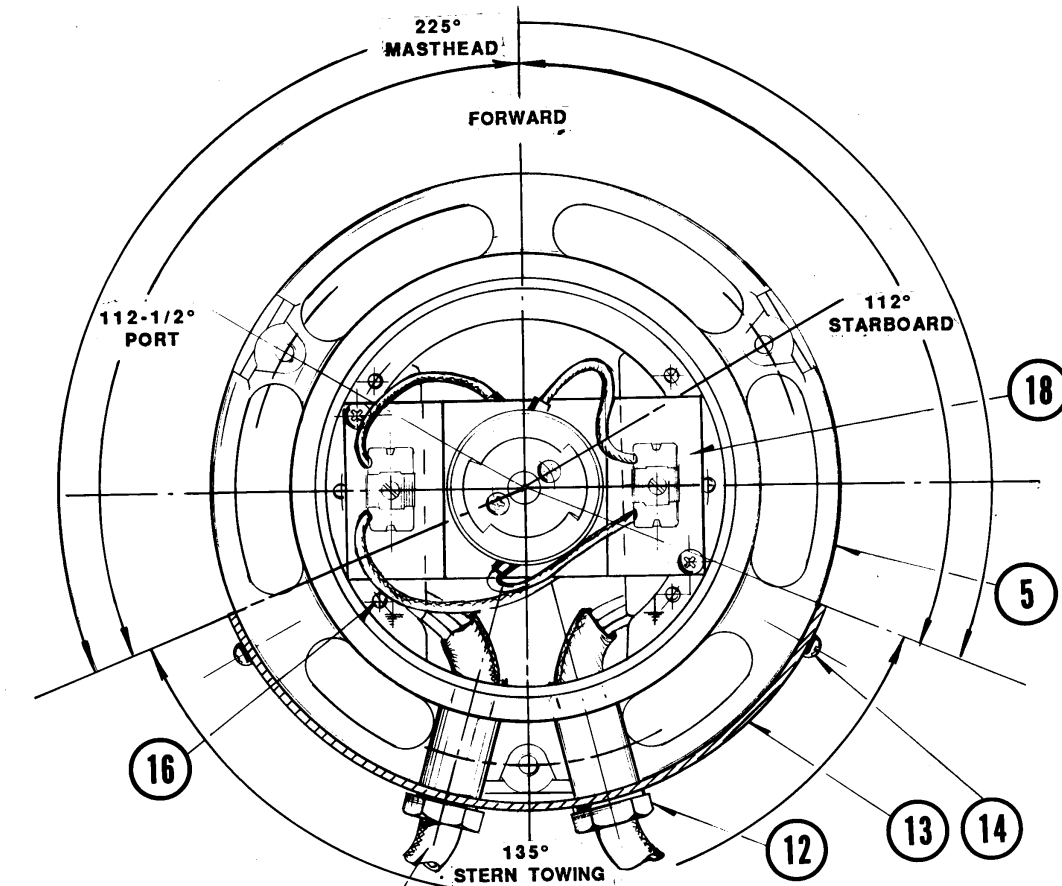
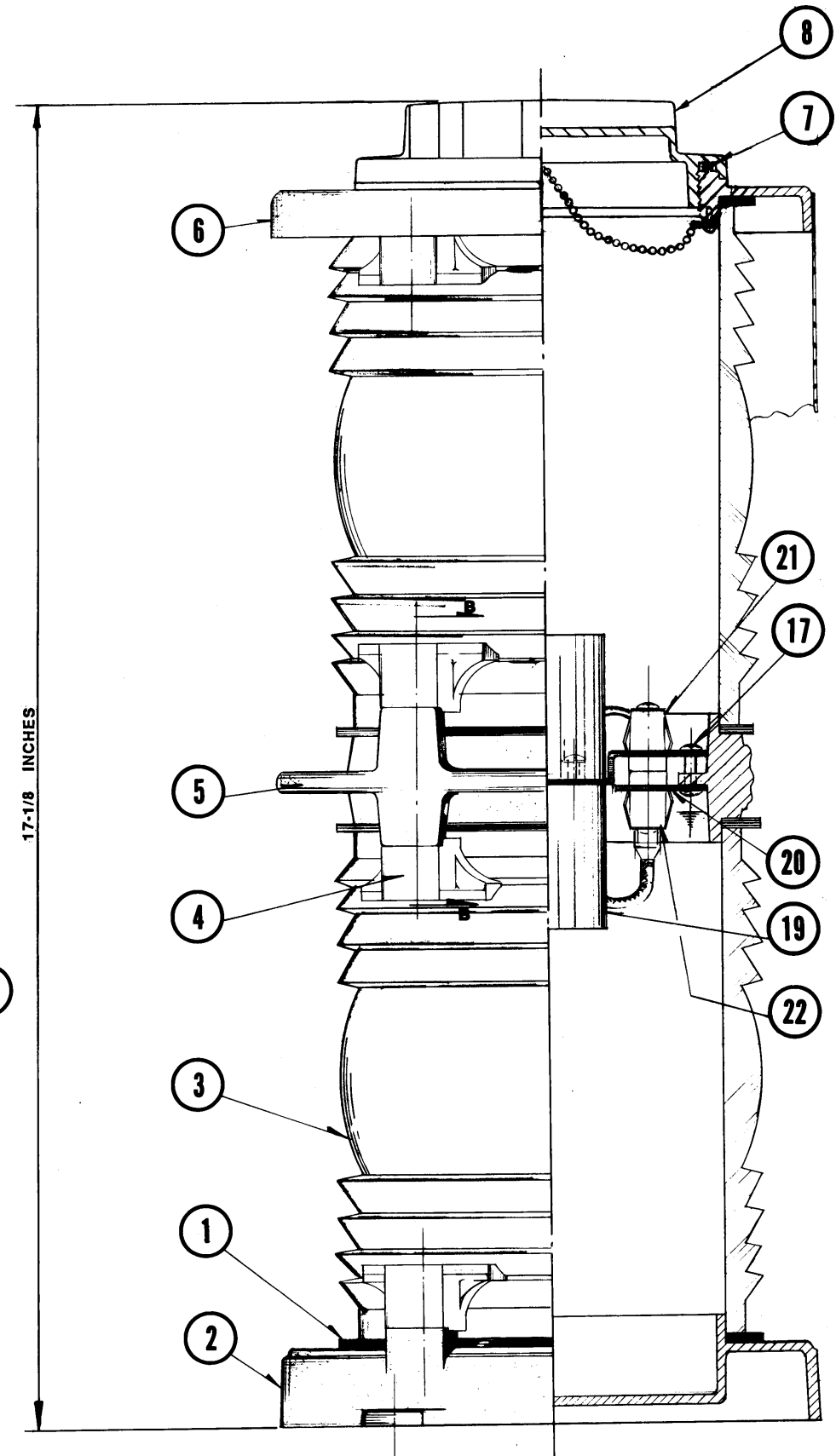


PERKO®



17-1/8 INCHES



Bill of Material

No.	Name of Piece	Qty	Material	Size & Specifications.
1	Gasket, Lens, Cat. No. 1143	4	Neoprene	3/4" x 4-1/2" x 5-1/2"
2	Casting, Light Bottom	1	Bronze	
3	Lens	2	Polycarb.	(See Note #1)
4	Retainer, Lens Cat. No. 1133	15	Polycarb.	(Cat. No. 1133 Includes Screws)
5	Casting, Center	1	Bronze	
6	Casting, Light Top	1	Bronze	
7	O-Ring, Cat. No. 1119	1	Neoprene	4-5/8" O.D. x 1/8"
8	Cap with Chain, Cat. No. 1105	1	Polycarb.	Thread 4" - 14
11	Screw	15	S/S	10-24 x 1-1/4"
12	Gland Nut, Packing Ring, O-Ring	2 Sets	Br.Br.Neoprene	O-Ring 7-16/11" 16 x 1/8"
13	Light Shield	0-1	Brass	Varies
14	Screw, Shield	Var.	S/S	8 x 1/4" S/Tap Screw
15	Electrical Cable	2	16/3-SO	.430" Dia. 3' Long
16	Screw	6	Brass	8-32 x 3/8"
17	Screw, Shoulder	2	S/S	8-32 x 5/8" (Part of # 18)
18	Socket Assembly, Cat. No. 0303	1	Includes 2 Lamps, Sockets, 2 Elec. Plugs and Assoc. Wiring Mounted on Plate.	
19	Socket, Lamp	2	Phenolic	(Part of #18) (See Note #2)
20	Receptacle Support Plate	2	Brass	.080"
21	Male Receptacle Cat No. 0303A00	2	Polycarb.	Polarized (Part of #18)
22	Female Receptacle Cat. No. 0303B00	2	Polycarb.	Polarized
23	Certification Plate	1	Brass	Not Available

VISIBILITY AND WATTAGE SPECIFICATIONS*

For Vessels Over 20 Meters (65.6 Ft.) in Length					
Cat. No.	Description	Visible Arc	Visible Miles	Watts	Lamp Cat. No.
1164RE0PLB	Red Sidelight	112-1/2°	3	60	0342004CLR or 0342RS4CLR
1164GE0PLB	Green Sidelight	112-1/2°	3		
1165E00PLB	White Masthead	225°	6		
1166E00PLB	White Stern Light	135°	3		
1166ME0PLB	Yellow Towing Light	135°	3		
1167E00PLB	Wht All-Round Lt.	360°	3		
1167HE0PLB	Wht All-Round Lt.	360°	6		
1168RE0PLB	Red All-Round Lt.	360°	3		
1168GE0PLB	Green All-Round Lt.	360°	3		
1168ME0PLB	Yellow All-Round Lt.	360°	3		

*Bulb Data - These are special PERKO Navigation Lamps, 120 Volts, Medium Prefocus Base, and must be used to meet the '72 COLREGS.

These navigation lights meet the U.S. Coast Guard Requirements under the '72 COLREGS and are classified by Underwriters' Laboratories Standard U.L. 1104 to meet the '72 COLREGS and the U.S. Inland Navigation Rules Act of 1980.

NOTES:

- 1.) Lens - Polycarbonate, Fresnel Optics, 360°

Color	Application	Cat. No.
White (Clear)	Masthead, All-Round	0261001CLR
White (Gray)	Stern, All-Round	0261001GRY
Red	Port Side & All-Round	0261001RED
Green	Starboard Side & All-Round	0261001GRN
Yellow	Towing & All-Round	0261001YLW
- 2.) Socket - Medium Prefocus Phenolic, Bryant #3743
Rated 1000 Watts - 250 Volts
U.L. Listed Perko, Cat. No. 0303.
- 3.) For Supply connections use 7/16 in O.D. Cable, stranded copper wire minimum 18 gauge 3 conductor 90° C (PREWIRED with 16/3-SO Cable).
- 4.) Cat. No. 1167HE0PLB is optional for Great Lakes Only.
- 5.) Weight - 18-1/4 Lbs.



PERKO®

16490 N.W. 13th Avenue Miami, FL 33169-5707

Date: 12/82 Drawn By: Ramses

Scale: None Revised: 8/2/22

FIGS. 1164-1168 SERIES
DOUBLE-LENS ELECTRIC NAVIGATION LIGHTS



INSTALLATION INSTRUCTIONS
FOR CAT. NOS. 1164-1168 "E" SERIES
DOUBLE LENS NAVIGATION LIGHTS



The above lights are designed for use on vessels over 20 meters (65.6 ft.) in length, operating on a 120 volt electrical system. In order to comply with the '72 COLREGS and the U.S. Inland Rules, the following must be adhered to:

MOUNTING INFORMATION
Read all instructions before proceeding.

- 1). These instructions describe the installation of the lights after the proper mounting location has been determined. For proper light selection, positioning and configuration, refer to the '72 COLREGS* U.S. Inland Navigation Rules* and/or other governing requirements applicable to the type and class of vessel.
- 2). These lights are designed to be mounted on a horizontal surface.
- 3). All electrical supply connections must be in accordance with applicable marine electrical standards and regulations and accomplished by a qualified marine electrician.
- 4). Proper lamp(s) must be selected in accordance with the identification plate mounted on the light.
- 5). Record information from the identification plate onto the "Navigation Light Certificate Of Compliance" and store with the vessel's documents.
- 6). If this installation is a retro-fit of older lights, the mounting arrangement has been changed from the previous style so that the light fixture is now bolted directly to the mounting surface. However, the new bolt holes match the location of the bolt holes in the old style base plate.
- 7). Align light by making sure that a reference line drawn through the fore-aft marks on the light is parallel to the fore-aft centerline of the vessel.
- 8). Using the base as a template, mark the mounting surface and drill for 3/8 inch bolts.
- 9). After bolting in place, recheck alignment.
- 10). To access lamp in the lower compartment:
 - (a). Make sure light is de-energized.
 - (b). Remove cover on top of light.
 - (c). Loosen the two diagonal screws adjacent to the upper compartment socket.
 - (d). Pull socket assembly straight up.
 - (a). After inserting lamp, reverse procedure to re-install.
Note that the socket assembly electrical connectors are polarized and will allow insertion one way only.

*The above referenced regulations can be obtained from:

U.S. Coast Guard
Washington, D.C. 20593
(or your local C.G. office)



NAVIGATION LIGHT CERTIFICATE OF COMPLIANCE

This navigation light has been tested and classified by UNDERWRITERS' LABORATORIES, INC. (U.L.) in accordance with the '72 COLREGS and the U.S. INLAND NAVIGATION RULES ACT OF 1980. When properly installed, and fitted with the correct lamp, this light is approved by the U.S. Coast Guard for use aboard U.S. Coast Guard inspected vessels. This certification is also accepted by other inspecting authorities. An identification plate attached to the light provides lamp replacement and official certification information.

Upon installation, record information below from the identification plate, as applicable to the class of vessel on which the light is to be fitted.

Type of Light _____
(Masthead, Stern, Etc)

Cat. No. _____
(Cat. No. 1164GE0PLB, 1165E00PLB, Etc.)

D.O.M. No. _____
(Die Stamped)

Vessel Length _____

Replacement Lamp _____
(Cat No. of lamp)

Date of Installation _____

Vessel Identification _____

08/22

PERKO, INC.
16490 N.W. 13th Avenue
Miami, FL 33169-5707
www.perko.com